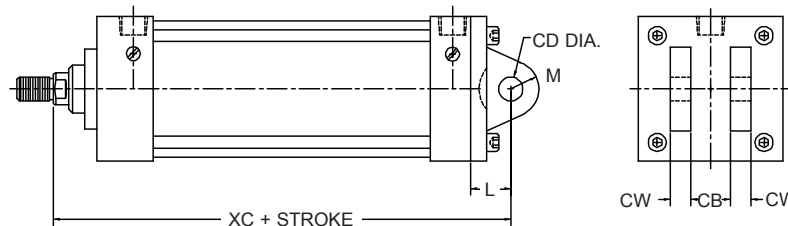


BOTTOM TAPPED MOUNT

BORE	1 1/2"		2"		2 1/2"		3 1/4"		4"		5"		6"		8"	
ROD DIA.	5/8"	1"	5/8"	1"	5/8"	1"	1"	1 3/8"	1"	1 3/8"	1"	1 3/8"	1 3/8"	1 3/4"	1 3/8"	1 3/4"
NT	1/4 - 20		5/16 - 18		3/8 - 16		1/2 - 13		1/2 - 13		5/8 - 11		3/4 - 10		3/4 - 10	
TK	3/8"		1/2"		5/8"		3/4"		3/4"		1"		1 1/8"		1 1/8"	
TN	5/8"		7/8"		1 1/4"		1 1/2"		2 1/16"		2 11/16"		3 1/4"		4 1/2"	
SN	2 1/4"		2 1/4"		2 3/8"		2 5/8"		2 5/8"		2 7/8"		3 1/8"		3 1/4"	
XT	1 15/16"	2 5/16"	1 15/16"	2 5/16"	1 15/16"	2 5/16"	2 7/16"	2 11/16"	2 7/16"	2 11/16"	2 7/16"	2 11/16"	2 13/16"	3 1/16"	2 13/16"	3 1/16"

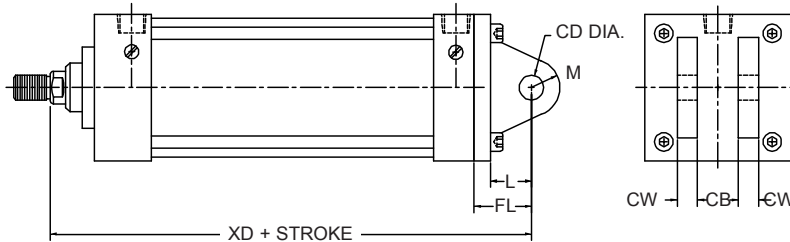
NFPA STYLE MP-1

**DETACHABLE
REAR CLEVIS
FIXED DIMENSIONS**
MODELS 15, 20 & 80
NOT AVAILABLE WITH
DPS SERIES DESIGN



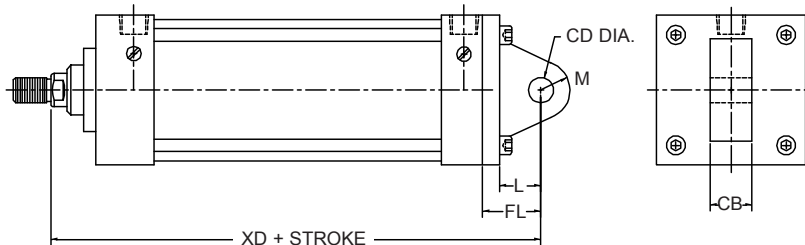
NFPA STYLE MP-2

DETACHABLE REAR CLEVIS
MODELS 15, 20 & 80
NOT AVAILABLE WITH
DPS SERIES DESIGN



NFPA STYLE MP-4

DETACHABLE EYE BRACKET
NOT AVAILABLE ON
MODEL 50, 60 & 80



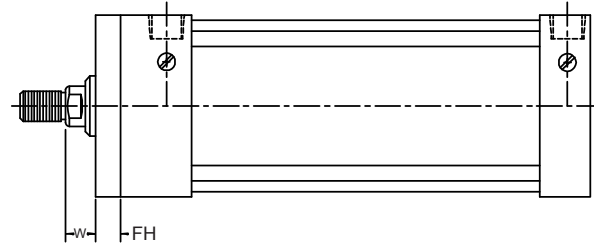
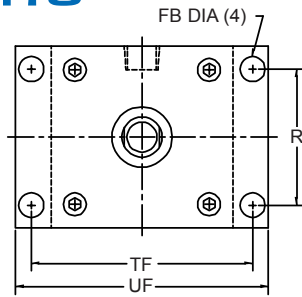
CLEVIS MOUNTS

BORE	1 1/2"		2"		2 1/2"		3 1/4"		4"		5"		6"		8"	
ROD DIA.	5/8"	1"	5/8"	1"	5/8"	1"	1"	1 3/8"	1"	1 3/8"	1"	1 3/8"	1 3/8"	1 3/4"	1 3/8"	1 3/4"
CB	3/4"		3/4"		3/4"		1 1/4"		1 1/4"		1 1/4"		1 1/2"		1 1/2"	
CD	1/2"		1/2"		1/2"		3/4"		3/4"		3/4"		1"		1"	
CW	1/2"		1/2"		1/2"		5/8"		5/8"		5/8"		3/4"		3/4"	
FL	1 1/8"		1 1/8"		1 1/8"		1 7/8"		1 7/8"		1 7/8"		2 1/4"		2 1/4"	
L	3/4"		3/4"		3/4"		1 1/4"		1 1/4"		1 1/4"		1 1/2"		1 1/2"	
M	5/8"		5/8"		5/8"		7/8"		7/8"		7/8"		1"		1"	
XC	5 3/8"	5 3/4"	5 3/8"	5 3/4"	5 1/2"	5 7/8"	6 7/8"	7 1/8"	6 7/8"	7 1/8"	7 1/8"	7 3/8"	8 1/8"	8 1/4"	8 1/4"	8 3/8"
XD	5 3/4"	6 1/8"	5 3/4"	6 1/8"	5 7/8"	6 1/4"	7 1/2"	7 3/4"	7 1/2"	7 3/4"	7 3/4"	8"	8 7/8"	9"	9"	9 1/8"

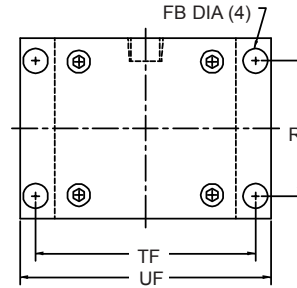
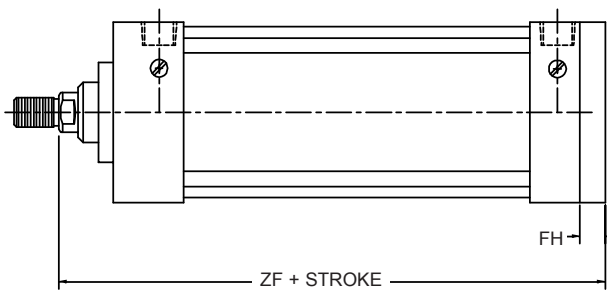
DURAMASTER CYLINDERS

NFPA STYLE MF-1

FRONT FLANGE MOUNT



NOT AVAILABLE
ON 8" BORE



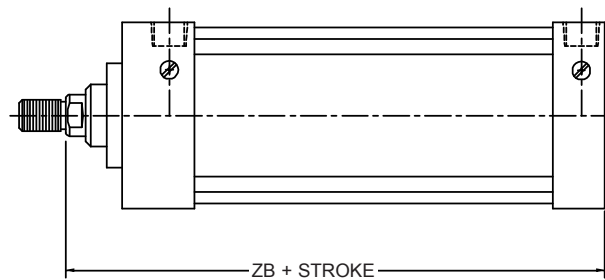
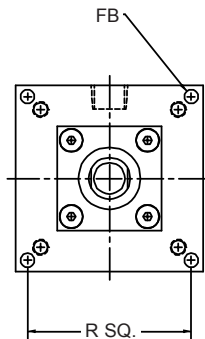
NFPA STYLE MF-2

REAR FLANGE MOUNT

NOT AVAILABLE ON 8" BORE
OR WITH DPS SERIES

FRONT AND REAR FLANGE MOUNT

BORE	1 1/2"		2"		2 1/2"		3 1/4"		4"		5"		6"	
ROD DIA.	5/8"	1"	5/8"	1"	5/8"	1"	1"	1 3/8"	1"	1 3/8"	1"	1 3/8"	1 3/8"	1 3/4"
FB	5/16"		3/8"		3/8"		7/16"		7/16"		9/16"		9/16"	
FH	3/8"		3/8"		3/8"		5/8"		5/8"		5/8"		3/4"	
TF	2 3/4"		3 3/8"		3 7/8"		4 11/16"		5 7/16"		6 5/8"		7 5/8"	
UF	3 3/8"		4 1/8"		4 5/8"		5 1/2"		6 1/4"		7 5/8"		8 5/8"	
W	5/8"	1"	5/8"	1"	5/8"	1"	3/4"	1"	3/4"	1"	3/4"	1"	7/8"	1"
ZF	5"	5 3/8"	5"	5 3/8"	5 1/8"	5 1/2"	6 1/4"	6 1/2"	6 1/4"	6 1/2"	6 1/4"	6 1/2"	7 3/8"	7 5/8"
R	1.43"		1.84"		2.19"		2.76"		3.32"		4.10"		4.88"	



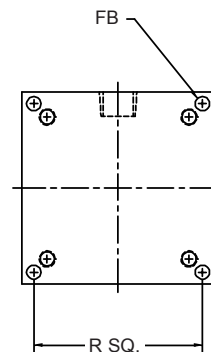
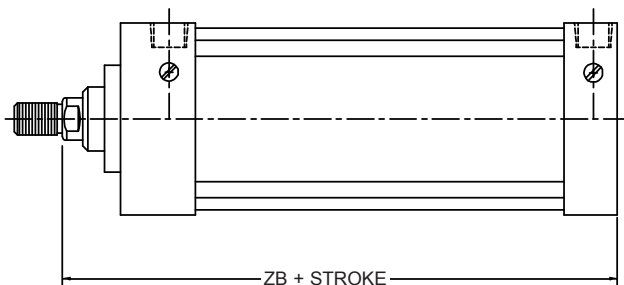
NFPA STYLE ME-3

HEAD SQUARE FLANGE MOUNT

8" BORE ONLY

NFPA STYLE ME-4

REAR SQUARE FLANGE MOUNT



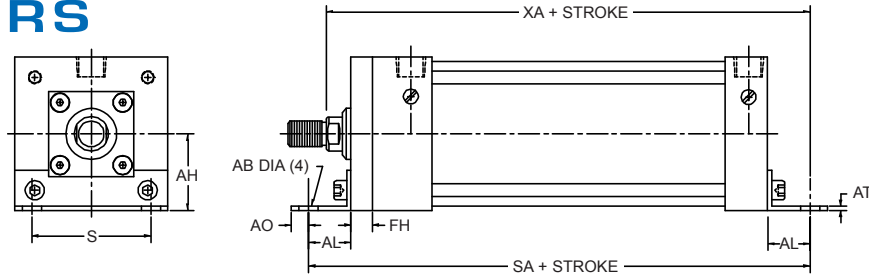
FRONT AND REAR SQUARE FLANGE MOUNT

BORE	8"	
ROD DIA.	1 3/8"	1 3/4"
FB	11/16"	
R	7.57	
ZB	6 3/4"	6 7/8"

DURAMASTER CYLINDERS

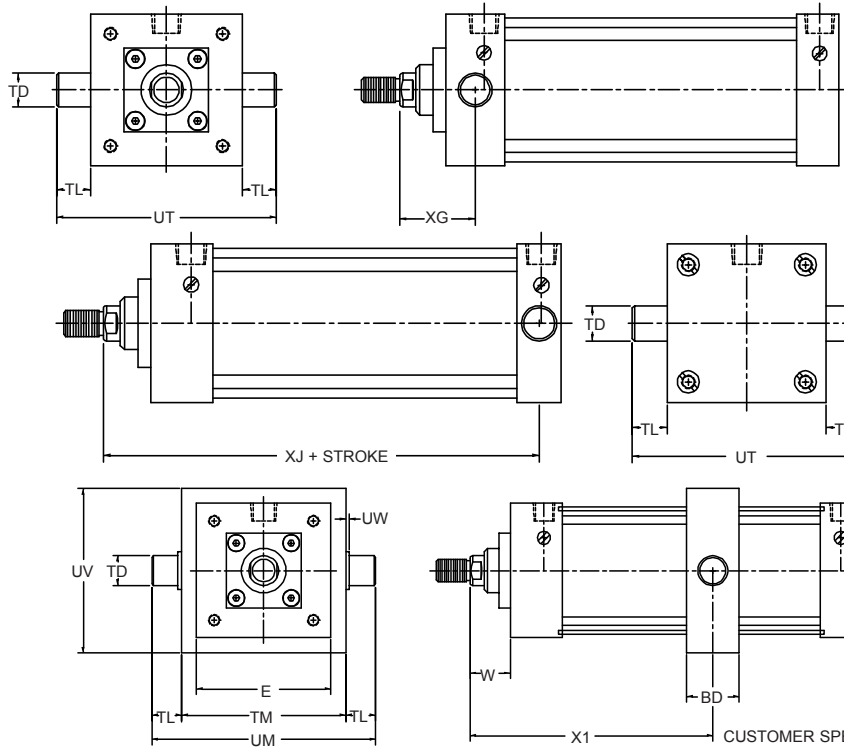
NFPA STYLE MS-1

ANGLE MOUNT



ANGLE MOUNT

BORE	1 1/2"		2"		2 1/2"		3 1/4"		4"		5"		6"		8"	
ROD DIA.	5/8"	1"	5/8"	1"	5/8"	1"	1"	1 3/8"	1"	1 3/8"	1"	1 3/8"	1 3/8"	1 3/4"	1 3/8"	1 3/4"
AB	3/8"		3/8"		3/8"		1/2"		1/2"		5/8"		5/8"		3/4"	
AH	1 3/16"		1 7/16"		1 5/8"		1 15/16"		2 1/4"		2 3/4"		3 1/4"		4 1/4"	
AL	1"		1"		1"		1 1/4"		1 1/4"		1 3/8"		1 3/8"		1 13/16"	
AO	3/8"		3/8"		3/8"		1/2"		1/2"		5/8"		5/8"		11/16"	
AT	1/8"		1/8"		1/8"		1/8"		1/8"		3/16"		3/16"		1/4"	
FH	3/8"		3/8"		3/8"		5/8"		0"		0"		0"		0"	
S	1 1/4"		1 3/4"		2 1/4"		2 3/4"		3 1/2"		4 1/4"		5 1/4"		7 1/8"	
SA	6"		6"		6 1/8"		7 3/8"		6 3/4"		7 1/4"		7 3/4"		8"	
XA	5 5/8"	6"	5 5/8"	6"	5 3/4"	6 1/8"	6 7/8"	7 1/8"	6 7/8"	7 1/8"	7 1/4"	7 1/2"	8"	8 1/4"	8 9/16"	8 13/16"



NFPA STYLE MT-1

FRONT TRUNNION

MT-1 mounts for 1 1/2" and 2" bore cylinders will have steel heads.

NFPA STYLE MT-2

REAR TRUNNION

NFPA STYLE MT-4

MID TRUNNION

Placed in center unless otherwise specified.

Consult factory for availability of 6" & 8" Bore

TRUNNION MOUNTS

BORE	1 1/2"		2"		2 1/2"		3 1/4"		4"		5"		6"		8"	
ROD DIA.	5/8"	1"	5/8"	1"	5/8"	1"	1"	1 3/8"	1"	1 3/8"	1"	1 3/8"	1 3/8"	1 3/4"	1 3/8"	1 3/4"
BD	1 1/4"		1 1/2"		1 1/2"		2"		2"		2"		2 1/2"		2 1/2"	
E	2"		2 1/2"		3"		3 3/4"		4 1/2"		5 1/2"		6 1/2"		8 1/2"	
TD	1"		1"		1"		1"		1"		1"		1 3/8"		1 3/8"	
TL	1"		1"		1"		1"		1"		1"		1 3/8"		1 3/8"	
TM	2 1/2"		3"		3 1/2"		4 1/2"		5 1/4"		6 1/4"		7 5/8"		9 3/4"	
UM	4 1/2"		5"		5 1/2"		6 1/2"		7 1/4"		8 1/4"		10 3/8"		12 1/2"	
UT	4"		4 1/2"		5"		5 3/4"		6 1/2"		7 1/2"		9 1/4"		11 1/4"	
UV	2 1/2"		3"		3 1/2"		4 1/4"		5"		6"		7"		9 1/2"	
W	1	1 3/8"	1"	1 3/8"	1"	1 3/8"	1 3/8"	1 5/8"	1 3/8"	1 5/8"	1 3/8"	1 5/8"	1 5/8"	1 3/4"	1 5/8"	1 3/8"
UW	1/8"		1/8"		1/8"		1/8"		1/8"		1/8"		1/8"		1/8"	
XG	1 3/4"	2 1/8"	1 3/4"	2 1/8"	1 3/4"	2 1/8"	2 1/4"	2 1/2"	2 1/4"	2 1/2"	2 1/4"	2 1/2"	2 5/8"	2 7/8"	2 5/8"	2 7/8"
XJ	4 1/8"	4 1/2"	4 1/8"	4 1/2"	4 1/4"	4 5/8"	5"	5 1/4"	5"	5 1/4"	5"	5 1/4"	5 7/8"	6 1/8"	6"	6 1/4"

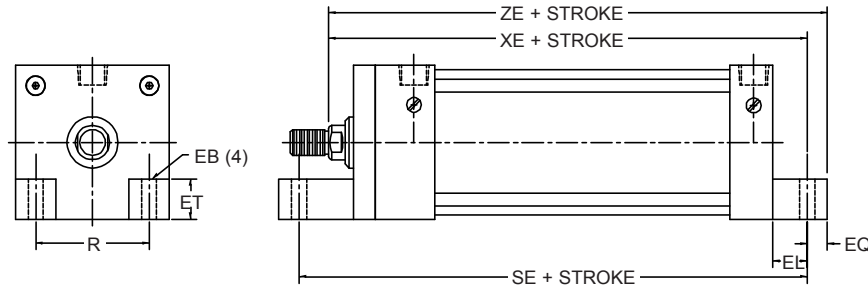
DURAMASTER CYLINDERS

NFPA STYLE MS-7

END LUG MOUNT

On Style MS-7, Model 15 with 1" rod is not available.

On Style MS-7, Rod Clevis on Models 15, 20 & 25 is not available.



NOT AVAILABLE
WITH DPS SERIES

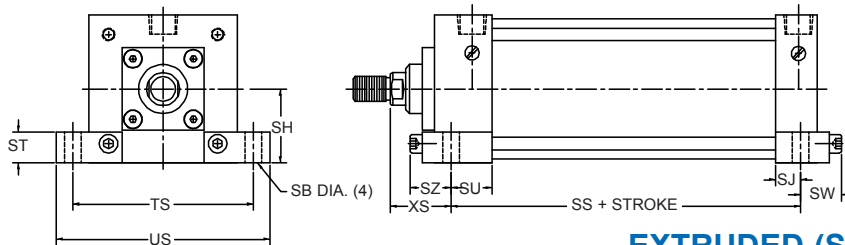
END LUG MOUNT

BORE	1 1/2"		2"		2 1/2"		3 1/4"		4"		5"		6"		8"	
ROD DIA.	5/8"	N/A	5/8"	1"	5/8"	1"	1"	1 3/8"	1"	1 3/8"	1"	1 3/8"	1 3/8"	1 3/4"	1 3/8"	1 3/4"
EB	3/8"		3/8"		3/8"		1/2"		1/2"		1/2"		3/4"		3/4"	
EL	3/4"		1"		1 1/16"		7/8"		1"		1 1/16"		1"		1 1/8"	
EQ	1/2"		5/16"		5/16"		3/8"		3/8"		1/2"		1/2"		5/8"	
ET	9/16"		11/16"		13/16"		1"		1 3/16"		1 3/8"		1 9/16"		2"	
XE	5 3/8"	5 9/16"	5 15/16"	5 15/16"	6 3/16"	6 1/2"	6 3/4"	6 5/8"	6 7/8"	6 15/16"	7 3/16"	7 5/8"	7 3/4"	7 7/8"	8 1/4"	
ZE	5 5/8"		5 7/8"		6 1/2"		6 7/8"		7"		7 7/16"		8 1/8"		8 1/2"	
R	1.43"		1.84"		2.19"		2.76"		3.32"		4.10"		4.88"		6.44"	
SE	5 1/2"		5 7/8"		6 1/4"		6 5/8"		6 7/8"		7 1/4"		7 3/4"		7 3/4"	

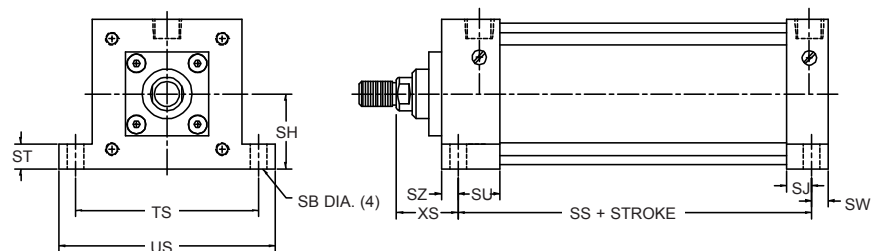
BOLT-ON (Available on all Models)

NFPA STYLE MS-2

SIDE LUG MOUNT



EXTRUDED (Standard on Models 15 thru 32)



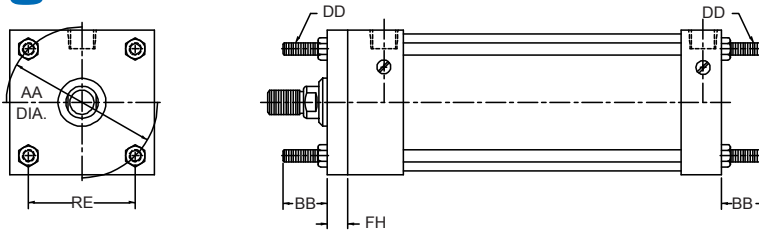
SIDE LUG MOUNT (EXTRUDED)

BORE	1 1/2"		2"		2 1/2"		3 1/4"		4"		5"		6"		8"	
ROD DIA.	5/8"	1"	5/8"	1"	5/8"	1"	1"	1 3/8"	1"	1 3/8"	1"	1 3/8"	1 3/8"	1 3/4"	1 3/8"	1 3/4"
SB	7/16"		7/16"		7/16"		9/16"		9/16"		13/16"		13/16"		13/16"	
SH	1"		1 1/4"		1 1/2"		1 7/8"		2 1/4"		2 3/4"		3 1/4"		4 1/4"	
SJ	5/8"		5/8"		5/8"		3/4"		3/4"		9/16"		13/16"		13/16"	
SS	2 7/8"		2 7/8"		3"		3 1/4"		3 1/4"		3 1/8"		3 5/8"		3 3/4"	
ST	1/2"		1/2"		1/2"		3/4"		3/4"		1"		1"		1"	
SU	3/4"		3/4"		3/4"		5/8"		1 1/4"		1 1/16"		1 5/16"		1 5/16"	
SW	3/8"		3/8"		3/8"		1/2"		1/2"		11/16"		11/16"		11/16"	
SZ	3/4"		3/4"		3/4"		1 1/8"		1/2"		11/16"		11/16"		11/16"	
TS	2 3/4"		3 1/4"		3 3/4"		4 3/4"		5 1/2"		6 7/8"		7 7/8"		9 7/8"	
US	3 1/2"		4"		4 1/2"		5 3/4"		6 1/2"		8 1/4"		9 1/4"		11 1/4"	
XS	1 3/8"	1 3/4"	1 3/8"	1 3/4"	1 3/8"	1 3/4"	1 7/8"	2 1/8"	1 7/8"	2 1/8"	2 1/16"	2 5/16"	2 5/16"	2 9/16"	2 5/16"	2 9/16"
ST bolt-on	.570"		.660"		.810"		.990"		.940"		1.250"		1.375"		1.750"	
SW bolt-on	1 1/8"		1 3/16"		1 3/16"		1 3/8"		1 3/8"		1 11/16"		1 13/16"		2 1/16"	
SZ bolt-on	1 3/8"		1 7/16"		1 7/16"		1 7/8"		1 3/8"		1 11/16"		1 13/16"		2 1/16"	

DURAMASTER CYLINDERS

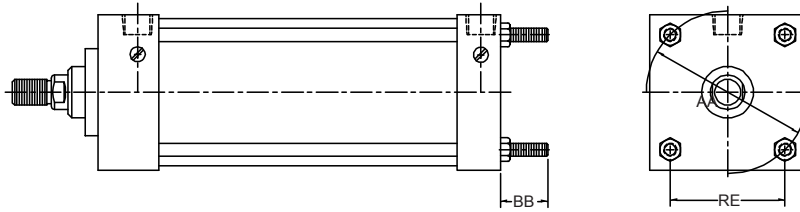
NFPA STYLE MX-1

EXTENDED TIE RODS
FRONT AND REAR



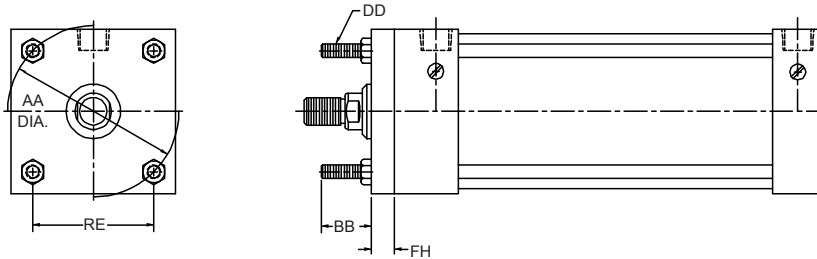
NFPA STYLE MX-2

EXTENDED TIE RODS - REAR



NFPA STYLE MX-3

EXTENDED TIE RODS - FRONT

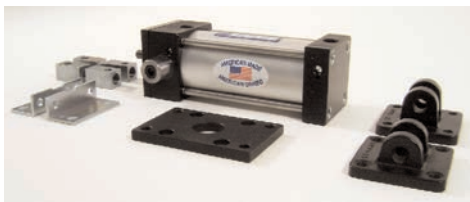


TIE ROD MOUNTS

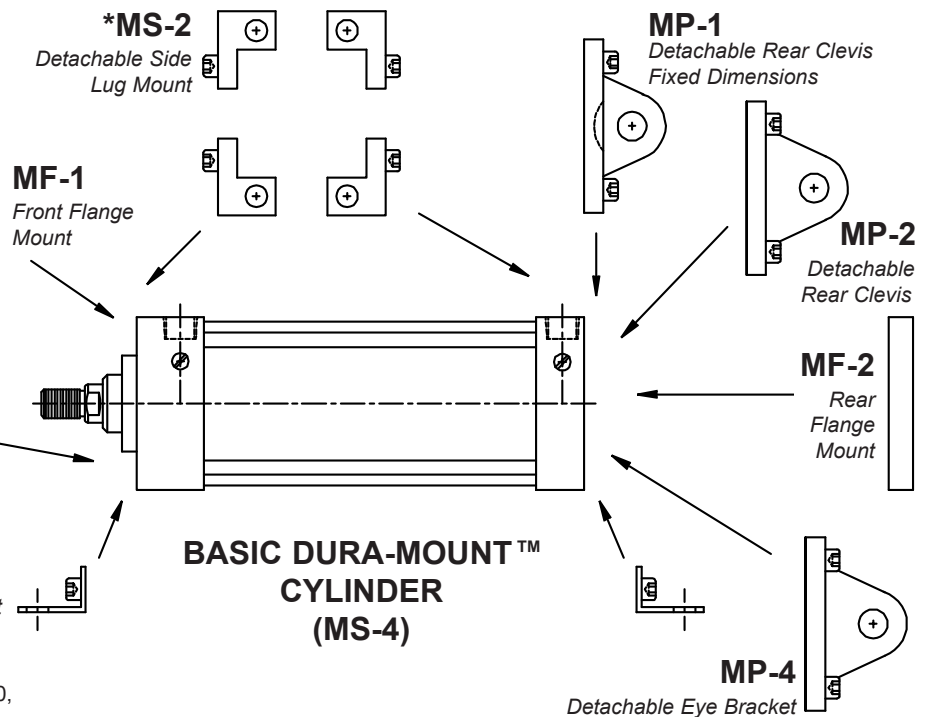
BORE	1 1/2"		2"		2 1/2"		3 1/4"		4"		5"		6"		8"	
ROD DIA.	5/8"	1"	5/8"	1"	5/8"	1"	1"	1 3/8"	1"	1 3/8"	1"	1 3/8"	1 3/4"	1 3/8"	1 3/4"	1 3/4"
AA	2.02"		2.6"		3.1"		3.9"		4.7"		5.8"		6.9"		9.1"	
BB	1"		1 1/8"		1 1/8"		1 3/8"		1 3/8"		1 13/16"		1 13/16"		2 5/16"	
DD	1/4-28		5/16-24		5/16-24		3/8-24		3/8-24		1/2-20		1/2-20		5/8-18	
RE	1.43"		1.84"		2.19"		2.76"		3.32"		4.10"		4.88"		6.44"	
FH	3/8"		3/8"		3/8"		5/8"		0"		0"		0"		0"	

DURA-MOUNT™

Multiple Mountings On One Basic Cylinder



DURAMASTER'S DURA-MOUNT utilizes an MS-4 NFPA mount (bottom tapped hole) as our basic cylinder. By incorporating recessed tie rod nuts, most other NFPA mountings can be achieved.



*MS-2 Extruded Heads are standard on Models 15, 20, 25, & 32 - Detachable must be specified.