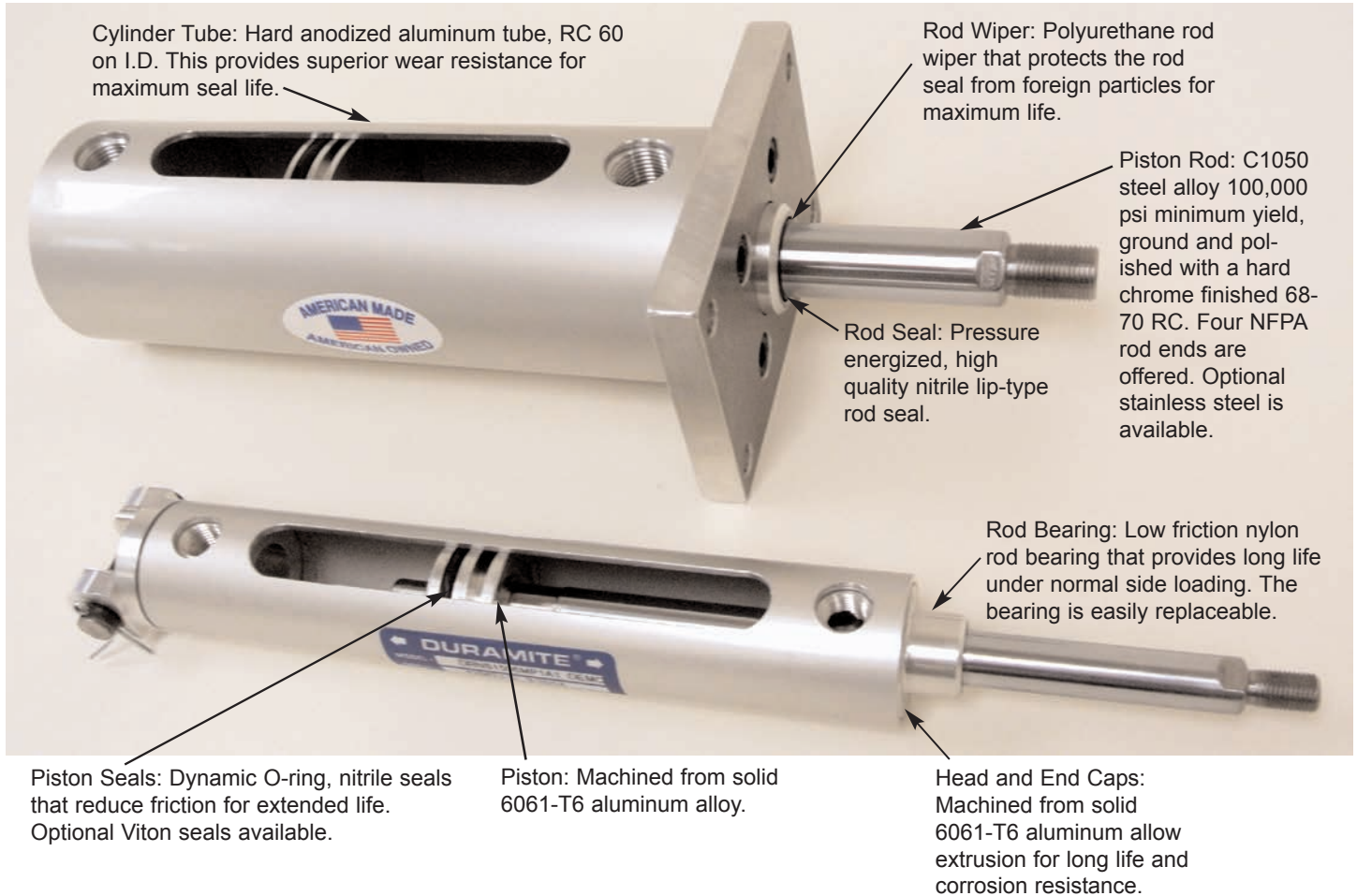


# DURAMITE CYLINDERS

## DURAMITE II ROUND NFPA Series DRN Cylinders



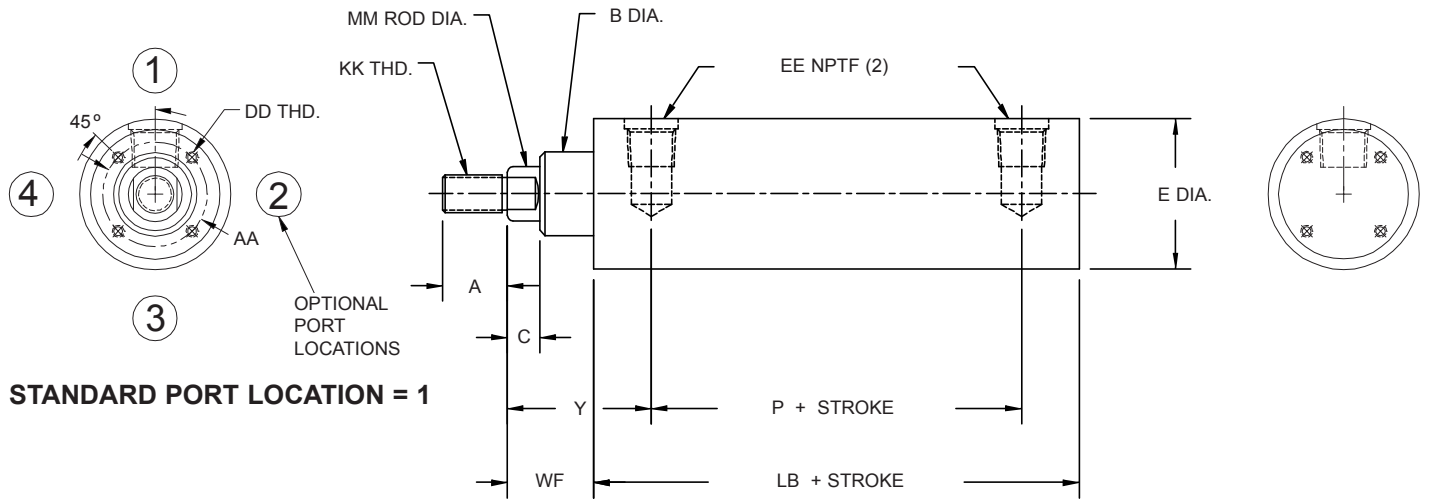
### HIGH PERFORMANCE NFPA INTERCHANGEABLE CYLINDERS

#### Standard Specifications:

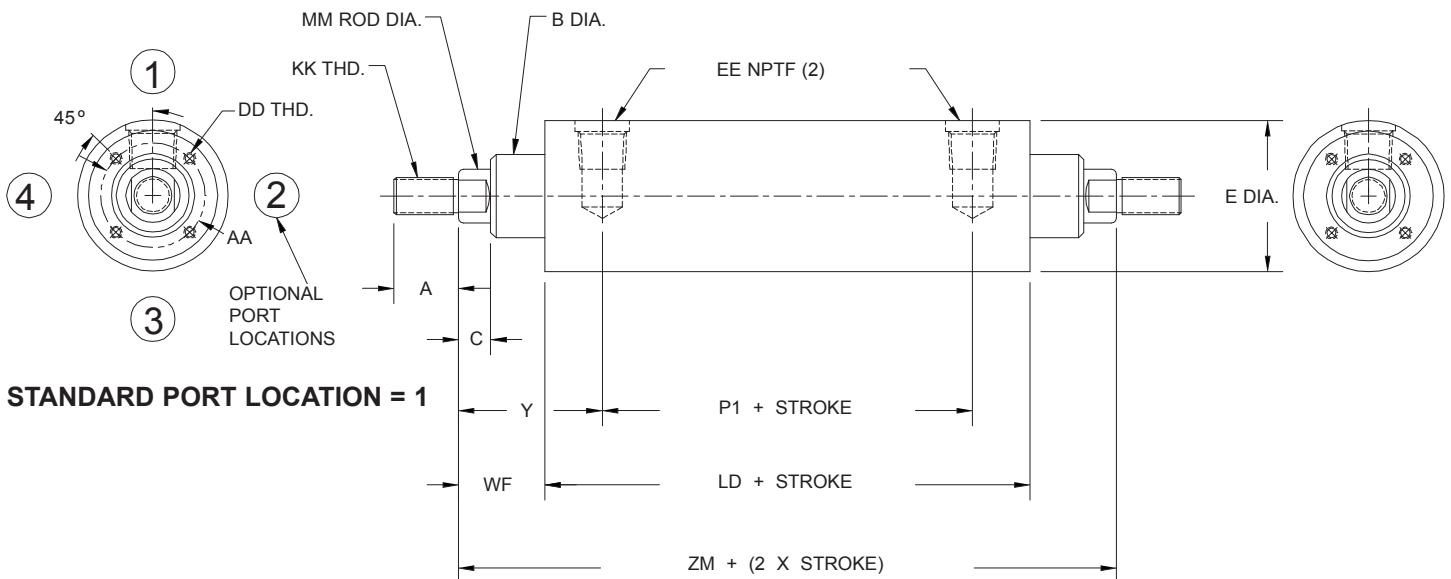
1. Pressure Rating: 250 PSI Pneumatic.  
350 PSI Hydraulic (Non-shock)
2. Bore Sizes: 1 1/2" through 4"
3. Mounting Styles: Front Flange, Rear Flange, Side Lug, End Lug, Clevis, and Eye Bracket.
4. Rod Ends: All Standard NFPA Styles
5. Head and End Caps: Machined from solid 6061-T6 aluminum allow extrusion for long life and corrosion resistance.
6. Piston: Machined from solid 6061-T6 aluminum alloy.
7. Piston Rod: C1050 steel alloy 100,000 psi minimum yield, ground and polished with a hard chrome finished 65-72 RC. Four NFPA rod ends are offered. Optional stainless steel is available.
8. Rod Bearing: Low friction nylon rod bearing that provides long life under normal side loading. The bearing is easily replaceable.
9. Cylinder Tube: Hard anodized aluminum tube, RC 60 on I.D. This provides superior wear resistance for maximum seal life.
10. Piston Seals: Dynamic O-ring, nitrile seals that reduce friction for extended life. Optional seals include Viton.
11. Rod Seal: Pressure energized, high quality nitrile lip-type rod seal.
12. Rod Wiper: Polyurethane rod wiper that protects the rod seal from foreign particles for maximum life.
13. Snap Ring: Retains Head & Cap Ends to cylinder tube with ease of removal for repairing of cylinder.
14. Cushions available on all sizes, except Model 15 (1 1/2" bore).



### BASIC CYLINDER



### DOUBLE END ROD CYLINDER



### DURAMITE II ROUND NFPA (SERIES DRN)

MODEL NUMBER	BORE SIZE	A	AA	B	C	DD	E	EE NPTF	KK	LB	LD	MM	P	P1	WF	Y	ZM
DRN15	1 1/2	3/4	1.21	31/32	3/8	6-32	1 3/4	1/4-18	7/16-20	3 5/8	4 1/8	5/8	2.29	2.79	1	1.67	6 1/8
DRN20	2	3/4	1.60	1 1/8	3/8	10-32	2 1/4	1/4-18	7/16-20	3 5/8	4 1/8	5/8	2.29	2.79	1	1.67	6 1/8
DRN25	2 1/2	3/4	2.00	1 1/8	3/8	1/4-28	2 3/4	1/4-18	7/16-20	3 3/4	4 1/4	5/8	2.42	2.92	1	1.67	6 1/4
DRN32	3 1/4	1 1/8	2.62	1 1/2	1/2	3/8-24	3 1/2	1/2-14	3/4-16	4 1/4	4 3/4	1	2.44	2.94	1 3/8	2.11	7 1/2
DRN40	4	1 1/8	2.62	1 1/2	1/2	3/8-24	4 1/4	1/2-14	3/4-16	4 1/4	4 3/4	1	2.44	2.94	1 3/8	2.11	7 1/2

Cushions not available on model DRNS15.