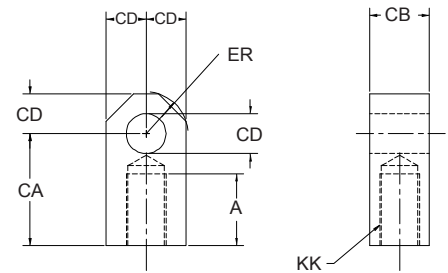


CAST IRON ROD EYE

PART NO.	A	CA	CB	CD	ER	KK	FITS ROD END
DRE-97-03	3/4"	1 1/2"	3/4"	1/2"	5/8"	1/2 - 20	A4 ROD ENDS
DRE-97-03A	3/4"	1 1/2"	3/4"	1/2"	5/8"	7/16 - 20	A1 ROD ENDS
DRE-97-065	1 1/8"	2 1/16"	1 1/4"	3/4"	7/8"	3/4 - 16	B1 ROD ENDS
DRE-97-12	1 5/8"	2 13/16"	1 1/2"	1"	1 3/16"	1 - 14	C1 & B3 ROD ENDS
DRE-97-16	2"	3 7/16"	2"	1 3/8"	1 9/16"	1 1/4 - 12	D1 & C4 ROD ENDS

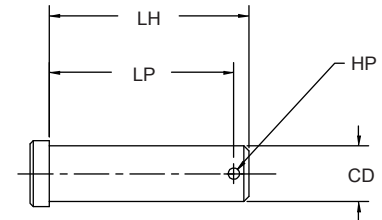
CAST IRON ROD EYE



CLEVIS PINS

PART NO.	CD	HP	LH	LP	USE WITH
DCP-96-03	1/2"	5/32"	2"	1 27/32"	DRC-92-03 or DRC-92-03A
DCP-96-065	3/4"	5/32"	2 3/4"	2 19/32"	DRC-92-065
DCP-96-12	1"	5/32"	3 1/2"	3 9/32"	DRC-92-12
DCP-96-16	1 3/8"	1/4"	5"	4 1/2"	DRC-92-16

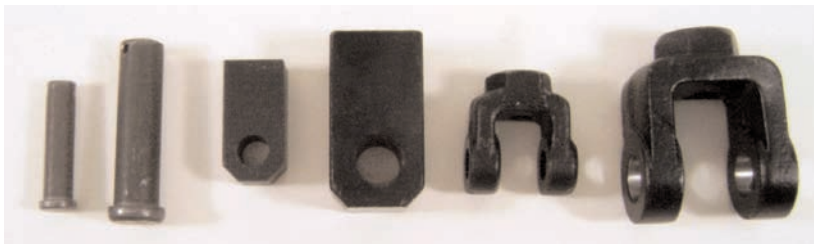
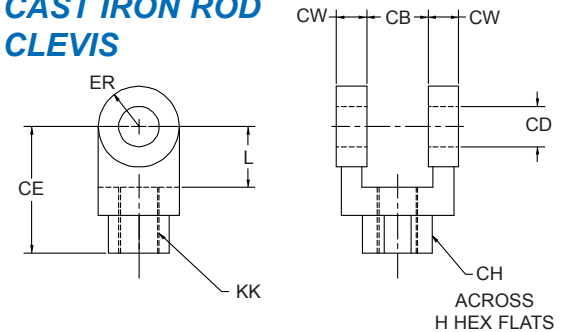
CLEVIS PIN



CAST IRON ROD CLEVIS

PART NO.	CB	CD	CE	CH	CW	ER	KK	L	FITS ROD END
DRC-92-03	.765"	1/2"	1 1/2"	1"	1/2"	1/2"	1/2 - 20	3/4"	A4 ROD ENDS
DRC-92-03A	.765"	1/2"	1 1/2"	1"	1/2"	1/2"	7/16 - 20	3/4"	A1 ROD ENDS
DRC-92-065	1.265"	3/4"	2 3/8"	1 1/4"	5/8"	3/4"	3/4 - 16	1 1/4"	B1 ROD ENDS
DRC-92-12	1.515"	1"	3 1/8"	1 1/2"	3/4"	1"	1 - 14	1 1/2"	C1 & B3 ROD ENDS
DRC-92-16	2.032"	1 3/8"	4 1/8"	2"	1"	1 3/8"	1 1/4 - 12	2"	D1 & C4 ROD ENDS

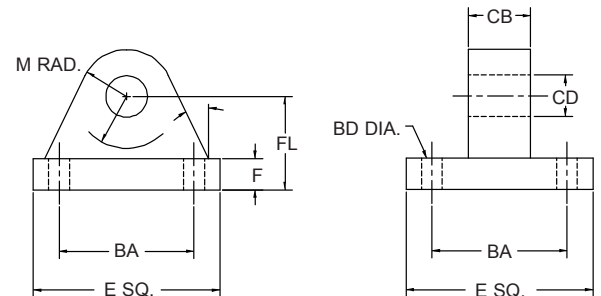
CAST IRON ROD CLEVIS



CAST IRON EYE BRACKET FITS MP-1 or MP-2

PART NO.	BA	BD	CB	CD	E	F	FL	LR	M
DEB-89-03A	1 5/8"	13/32"	3/4"	1/2"	2 1/2"	3/8"	1 1/8"	3/4"	1/2"
DEB-89-065A	2 9/16"	17/32"	1 1/4"	3/4"	3 1/2"	5/8"	1 7/8"	1 1/4"	3/4"
DEB-89-12A	3 1/4"	21/32"	1 1/2"	1"	4 1/2"	3/4"	2 1/4"	1 1/2"	1"

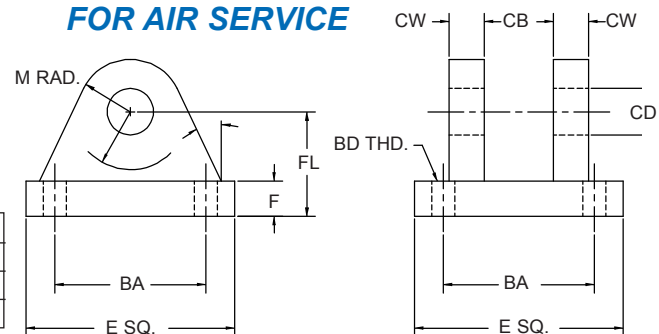
CAST IRON EYE BRACKET FOR AIR SERVICE



CAST IRON CLEVIS BRACKET FITS MP-4 MOUNT

PART NO.	BA	BD	CB	CD	CW	E	F	FL	LR	M
DCB-91-03A	1 5/8"	3/8"	.765"	1/2"	1/2"	2 1/2"	3/8"	1 1/8"	1/2"	1/2"
DCB-91-065A	2 9/16"	1/2"	1.265"	3/4"	5/8"	3 1/2"	5/8"	1 7/8"	1 1/16"	3/4"
DCB-91-12A	3 1/4"	5/8"	1.515"	1"	3/4"	4 1/2"	3/4"	2 1/4"	1 1/4"	1"

CAST IRON CLEVIS BRACKET FOR AIR SERVICE



DURAMASTER CYLINDERS



TECHNICAL INFORMATION:

Working Temperature	Min. -5°C Max. 90°C
Operating Time	On 2 ms Off .1 ms
Life Expectancy at full load	10 ⁶ Cycles
Repeatability	.001 inch
Vibration Resistance	5 to 1000 Hz
Shock Resistance	30g @ 11ms
Minimum Magnetic Field to actuate	85 Gauss
Maximum Switch Current	1 AMP

VOLTAGE RATING:

Reed Switch: 240 V Max AC or DC
Hall Effect: 5-24 V DC

MAGNETIC REED SWITCHES

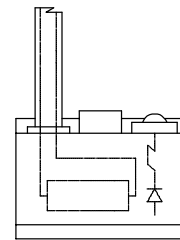
Fully Adjustable Position Sensing & Input

MAGNETIC REED SWITCHES

Duramaster's Reed and Hall Effect switches provide fully adjustable position sensing and input for many types of sequences and programmable controllers. Both Switches have a high degree of sensitivity with low EMI/RFI susceptibility and incorporate internal surge suppression for extended life expectancy.

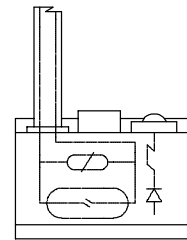
A magnetic disk coupled to the piston triggers the externally mounted switch. A built-in indicator light allows ease of testing as well as locating the switch on the cylinder. DO NOT USE an incandescent light bulb as high in-rush may damage the switch. Also, use the switch to indicate the end of the physical stroke. Do not rely on the switch alone to stop the cylinder travel.

The comprehensive design of the cylinder barrel thickness and mass of magnet, coupled with low profile switch provides sensitivity, dependability, repeatability and desired response time.



DRS-1031

Hall Effect & Light
(magnetic resonance)
5-24 VDC
Normally Open, Sourcing

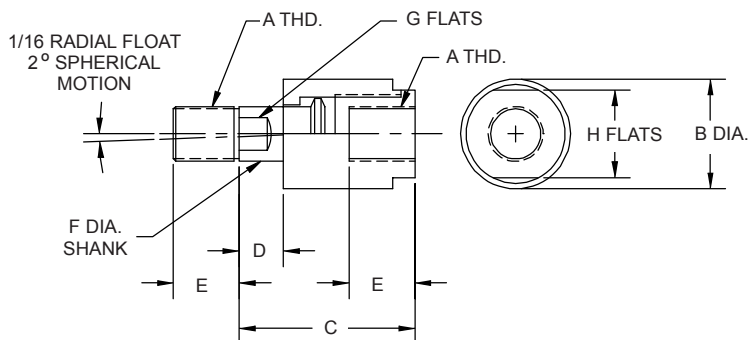


DRS-1004

Reed Switch, MOV & Light.
5-240 VAC/VDC
Normally Open.
(.005 Amp Minimum)

DRS-1032

Sinking



LINEAR ALIGNMENT COUPLERS

PART NO.	A	B	C	D	E	F	G	H	MAX. PULL AT YIELD
DAC-.250	1/4 - 28	7/8"	1 1/4"	1/4"	5/8"	5/16"	3/16"	3/4"	6,000
DAC-.312	5/16 - 24	7/8"	1 1/4"	1/4"	5/8"	5/16"	3/16"	3/4"	6,800
DAC-.375	3/8 - 24	7/8"	1 1/4"	1/4"	5/8"	5/16"	3/16"	3/4"	8,300
DAC-.437	7/16 - 20	1 1/4"	2"	1/2"	3/4"	5/8"	1/2"	1"	10,000
DAC-.500	1/2 - 20	1 1/4"	2"	1/2"	3/4"	5/8"	1/2"	1"	14,000
DAC-.625	5/8 - 18	1 1/4"	2"	1/2"	3/4"	5/8"	1/2"	1"	19,000
DAC-.750	3/4 - 16	1 3/4"	2 5/16"	1/2"	1 1/8"	31/32"	13/16"	1 1/2"	34,000
DAC-.875	7/8 - 14	1 3/4"	2 5/16"	1/2"	1 1/8"	31/32"	13/16"	1 1/2"	39,000
DAC-1.000	1 - 14	2 1/2"	2 15/16"	1/2"	1 5/8"	1 3/8"	1 5/32"	2 1/4"	64,000
DAC-1.250	1 1/4 - 12	2 1/2"	2 15/16"	1/2"	1 5/8"	1 3/8"	1 5/32"	2 1/4"	78,000

ALIGNMENT COUPLERS

