

DURAMASTER CYLINDERS

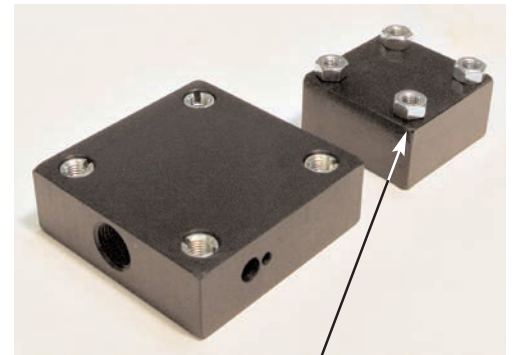
THE DIFFERENCE BETWEEN THE DS AND DPS SERIES DESIGN

DURAMOUNT

The NFPA **DS SERIES** features recessed tie rod nuts for a clean design, and the internal threads allow for mounting options to be interchanged in the field.

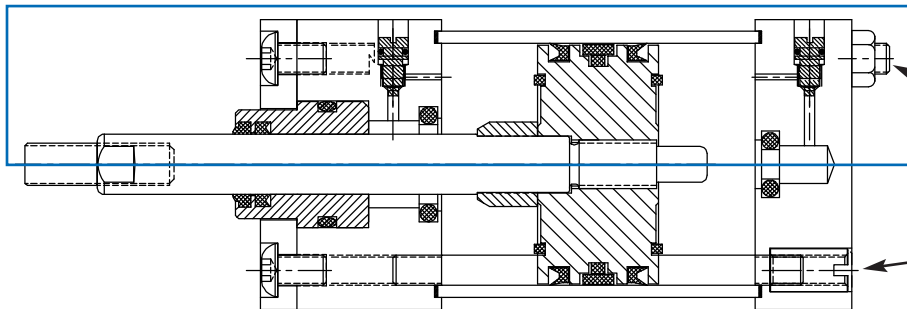
The NFPA **DPS SERIES** features external hex nuts, and offers a cost savings to OEM's or customers looking for High Quality at **LOWER COST**.

SAME NFPA DIMENSIONS APPLY TO BOTH DS AND DPS SERIES, SEE PAGE 3.



EXPOSED TIE ROD NUTS IN THE REAR (DPS SERIES)

RECESSED TIE ROD NUTS IN THE REAR (DS SERIES)



NOTE: Model 15 (1.50" Bore) Not Available With Front Cushion or Front Bumper When Ordered With 1" Rod.

HOW TO ORDER DS & DPS SERIES

NFPA DPS SERIES CYLINDERS ARE SPECIFIED AS:

D P	<input type="checkbox"/>	<input type="checkbox"/> <input type="checkbox"/>	<input type="checkbox"/> <input type="checkbox"/>	<input type="checkbox"/> <input type="checkbox"/> <input type="checkbox"/>	<input type="checkbox"/>	<input type="checkbox"/>	<input type="checkbox"/> <input type="checkbox"/>
DP DURAMOUNT CYLINDERS (STANDARD)	D = Double Rod S = Single Rod	Bore Size 15 = 1 1/2" 20 = 2" 25 = 2 1/2" 32 = 3 1/4" 40 = 4" 50 = 5" 60 = 6" 80 = 8"	Stroke (Inches)	Mounting Style NFPA****	Rod Diameter A = 5/8" B = 1" C = 1 3/8" D = 1 3/4"	Rod End Style #1 #2 #3 #4	Additional Options M = Magnetic Piston S = Rod Scraper (Metal) C = Both Cushions R = Rear Cushions F = Front Cushion **H = Hydraulic ***B = Bumpers (both ends supplied) S1 = Stainless Steel Piston Rod L = Low Friction Seals V = Viton Seals X = Other

EXAMPLES:

- DPS 60 08 MS2 C2-CS DURAMASTER Cylinder with exposed nuts, Single Rod, 6" Bore X 8" Stroke, Side Lug Mount, 1 3/8" Rod Dia., Female Rod End 1-14, Both Cushions, Rod Scraper.
- DPD 20 12 MS4 A 1-C DURAMASTER Cylinder with exposed nuts, Double Rod, 2" Bore X 12" Stroke, Basic Mount MS4, 5/8" Rod Dia., Male Rod End 7/16-20, Both Cushions.

**Poly Pak loaded seals supplied when hydraulic. Consult factory for air over all service.
 *** Decreases stroke by 1/16". Model 15 with 1" rod - not available with front bumper.
 **** MF-2 or MS-7 Mounts are not available with DPS Series Design. MP-1 not available on Models 15, 20 & 80 DPS Series. MP2 not available on Models 15 & 20.

ROD END STYLES

ROD DIA.	A	C	D	V	CC	FF	KK
5/8"	3/4"	3/8"	1/2"	5/8"	1/2" - 20	5/8 - 18	7/16 - 20
1"	1 1/8"	1/2"	7/8"	7/8"	7/8" - 14	1 - 14	3/4 - 16
1 3/8"	1 5/8"	5/8"	1 1/4"	1"	1 1/4" - 12	1 3/8 - 12	1 - 14
1 3/4"	2"	3/4"	1 1/2"	1"	1 1/2" - 12	1 3/4 - 12	1 1/4 - 12

Studs for rod ends can be furnished upon request for 1 1/2" thru 8" bores.

