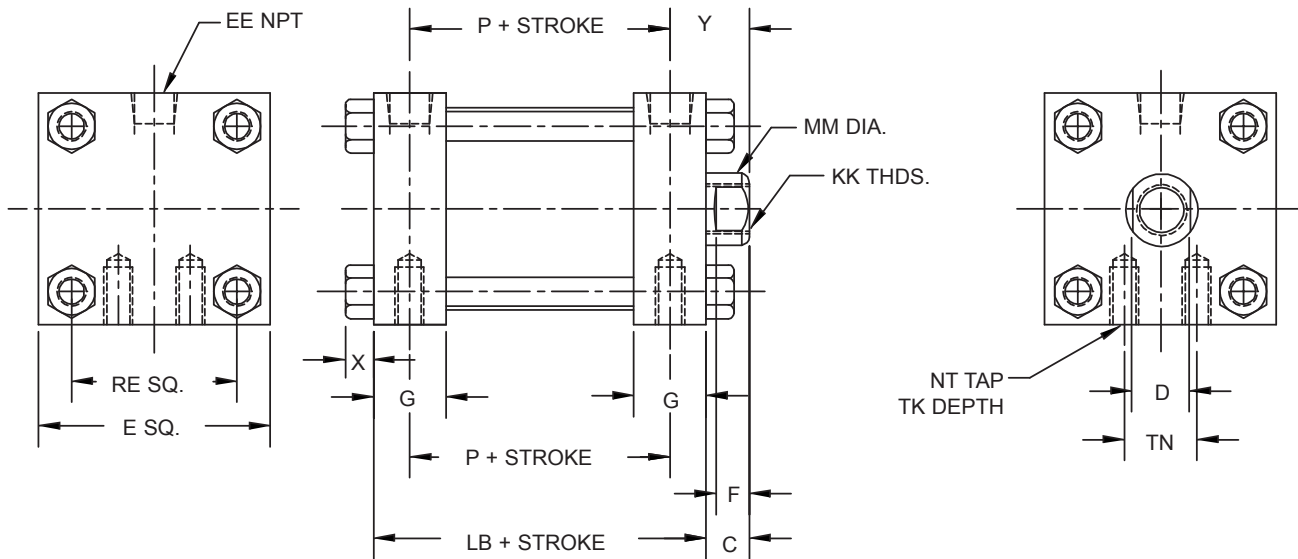


DURA-E was designed for the purpose of furnishing OEM's with a tough medium duty cylinder for powering their machines when fewer cycle times are required. Lower in cost than NFPA Dura-Mount with an emphasis on quality and delivery. Sizes 1-1/2" thru 5" bore are offered on all DURA-E, DURA-DOUBLE, DURA-POWER, DURA-BACK-TO-BACK and DURA-MULTI-POSITION. Pressure Rating: 200 PSI Air Only.

NOTE: Magnetic Piston option adds 1/2" to overall length on ALL bores, regardless of mounting style.  
**MS4 Mount (shown here) is standard on all cylinders. Ports at position 1 is standard.**

## DURA-E BASIC CYLINDER



### DURA-E BASIC CYLINDER EXAMPLE: DES1512MS4A2

BORE	C	D	E SQ.	EE NPT	F	G	KK THD.	LB	MM DIA.	NT	P	RE SQ.	TK	TN	X	Y
1-1/2	3/8	1/2	2	1/8-27	5/16	5/8	3/8-24	1 3/4	5/8	1/4-20	1 1/8	1.43	3/8	5/8	1/4	11/16
2	3/8	1/2	2 1/2	1/8-27	5/16	5/8	3/8-24	1 3/4	5/8	1/4-20	1 1/8	1.84	3/8	7/8	5/16	11/16
2-1/2	3/8	1/2	3	1/8-27	5/16	5/8	3/8-24	1 3/4	5/8	5/16-18	1 1/8	2.19	5/8	1 1/4	5/16	11/16
3-1/4	1/2	13/16	3 3/4	1/4-18	7/16	7/8	5/8-18	2 1/2	1	3/8-16	1 5/8	2.94	7/8	1 1/2	3/8	15/16
4	1/2	13/16	4 1/2	1/4-18	7/16	7/8	5/8-18	2 1/2	1	3/8-16	1 5/8	3.56	7/8	2 1/16	3/8	15/16
5	1/2	13/16	5 1/2	3/8-18	7/16	1	5/8-18	2 3/4	1	1/2-13	1 3/4	4.10	1	2 11/16	1/2	1